

BALDOR® • RELIANCE 

Product Information Packet

AEM4307-4

40HP, 1780RPM, 3PH, 60HZ, 364U, 1448M, TEFC, F1

Part Detail							
Revision:	H	Status:	PRD/A	Change #:		Proprietary:	No
Type:	AC	Elec. Spec:	A36WG0744	CD Diagram:	416820-036	Mfg Plant:	
Mech. Spec:		Layout:	617428-014	Poles:	04	Created Date:	10-19-2010
Base:		Eff. Date:	06-08-2016	Leads:	3#6		

Specs			
Catalog Number:	AEM4307-4	Feedback Device:	NO FEEDBACK
Enclosure:	TEFC	Heater Indicator:	No Heater
Frame:	364U	Insulation Class:	F
Frame Material:	Iron	Inverter Code:	Not Inverter
Output @ Frequency:	40.000 HP @ 60 HZ	KVA Code:	G
Synchronous Speed @ Frequency:	1800 RPM @ 60 HZ	Lifting Lugs:	No Lifting Lugs
Voltage @ Frequency:	460.0 V @ 60 HZ	Motor Lead Quantity/Wire Size:	3 @ 6 AWG
XP Class and Group:	None	Motor Type:	A36050M
XP Division:	Not Applicable	Mounting Arrangement:	F1
Agency Approvals:	CCSA US	Pulley End Bearing Type:	Ball
	CSA EEV	Pulley Face Code:	Standard
Auxillary Box:	No Auxillary Box	Shaft Ground Indicator:	No Shaft Grounding
Base Indicator:	Rigid	Shaft Rotation:	Reversible
Bearing Grease Type:	Polyrex EM (-20F +300F)	Shaft Slinger Indicator:	Shaft Slinger
Current @ Voltage:	45.000 A @ 460.0 V	Speed Code:	Single Speed
Design Code:	B	Motor Standards:	NEMA
Drip Cover:	No Drip Cover	Starting Method:	Direct on line
Duty Rating:	CONT	Thermal Device - Bearing:	NONE (OLD)

Thermal Device - Winding:

None

Nameplate NP2492L										
SPEC NO.	P36G3112			CAT.NO.	AEM4307-4			FRAME	364U	
HP	40	VOLTS	460	PHASE	3	DESIGN	B	TYPE	P	
RPM	1785	AMPS	45	HZ	60	AMB	65	SF	1.00	
DRIVE END BEARING	65BC03JPP30A			LUBRICATION	MOBIL POLYREX EM		DUTY	CONT	INSUL.CLASS	F
OPP D.E. BEARING	65BC03JPP30A			ENCL	TEFC		CODE	G		
AMB	65	ALERNATE RATING-S.F.	1.00	ALTITUDE	3300		NEMA-NOM-EFF	94.5		
SER.NO.				GUARANTEED EFFICIENCY	93.6					
	MOTOR WEIGHT			874						
				CAT# AEM4307-4						

Parts List		
Part Number	Description	Quantity
SA209347	SA P36G3112	1.000 EA
RA196609	RA P36G3112	1.000 EA
000692000VD	LABEL WARNING	1.000 EA
078550004T	FAN OUTER E320 BRONZE 13.5" OD DIA.	1.000 EA
004824015A	GREASE POLYREX EM	0.544 LB
032018008AK	HHCS 1/4-20X1 PLATED	4.000 EA
032018012DK	HHCS 1/2-13X1-1/2 PLTD.	4.000 EA
032018024CK	HHCS 3/8-16X3 PLTD.	3.000 EA
034180012DA	KEY 1X4X1/4X1-1/2 L	1.000 EA
034530052AB	P/NIP 1/8X6-1/2 GALV.	1.000 EA
034690001AB	1/8" NPT SQHDPLG	1.000 EA
034690002AB	PPLG 1/4" PLTD.	1.000 EA
034690002AB	PPLG 1/4" PLTD.	1.000 EA
085922073B	BRKT 360 085922072WCC KB	1.000 EA
078559001A	+FANCV - 360	1.000 EA
085922073B	BRKT 360 085922072WCC KB	1.000 EA
410700004F	WSHR	1.000 EA
415045002E	SLGR	1.000 EA
415096002A	CPLG 1/8 HEX TYPE	1.000 EA
418151057A	PLASTIC DRAIN,ODE BRKT	1.000 EA
032018012DK	HHCS 1/2-13X1-1/2 PLTD.	4.000 EA
032018024CK	HHCS 3/8-16X3 PLTD.	3.000 EA
032018010CK	HHCS 3/8-16X1-1/4 PLTD.	4.000 EA
415045002E	SLGR	1.000 EA

Parts List (continued)		
Part Number	Description	Quantity
415096002A	CPLG 1/8 HEX TYPE	1.000 EA
418151057A	PLASTIC DRAIN,ODE BRKT	1.000 EA
033512008LB	HHTTS 1/4-20X1 PLATED	4.000 EA
034000014AB	WSH ID.406 OD.812 TH.065	4.000 EA
065776000C	TERBD 320-400	1.000 EA
067053000B	GASK 320-400	1.000 EA
076708000BB	C/B - 360	1.000 EA
076709000A	C/B Cover - 360	1.000 EA
406099000A	PLUG - FAN COVER 320-440	1.000 EA
415000103H	415000103H	1.000 EA
MG1025G05	WILKOFASST, 789.227, MED. GRAY CHAR. MET.	0.250 GA
033775004EA	DRSCR #6-1/4 304 S.S.	4.000 EA
034530020AB	P/NIP 1/8X2-1/2 PLTED	1.000 EA
034690001AB	1/8" NPT SQHDPLG	1.000 EA
034180034GA	KEY 1/2X1/2X4-1/4 L	1.000 EA
NP2492L	CP, SUPER-E, SS, CSA, ALT. RATING,	1.000 EA
421948051	LABEL, MYLAR	1.000 EA
14PA1000	PACKAGING 314 GROUP COMBINED PRINT	1.000 EA
000613006PU	N/P (RELEASE QTY 10,000) UL CSA LABEL	1.000 EA
032018005DL	1/2-13 X 5/8 SILICON BRONZE HHCS	1.000 EA

REL. S.O.	FRAME	HP	TYPE	PHASE/HERTZ	RPM	VOLTS
	364U	40	P	3/60	1785	460
AMPS	DUTY	AMB °C/ INSUL.	S.F.	NEMA DESIGN	CODE LETTER	ENCL.
45	CONT	65/F	1.00	B	G	TEFC
E/S	ROTOR	TEST S.O.	TEST DATE	STATOR RES. @25 °C OHMS (BETWEEN LINES)		
591795	418141-35-BE	---	---	.173		

PERFORMANCE					
LOAD	HP	AMPERES	RPM	POWER FACTOR %	EFFICIENCY %
NO LOAD	0	13.3	1800	5.22	0
1/4	10.0	17.1	1796	59.3	92.3
2/4	20.0	25.1	1792	78.9	94.7
3/4	30.0	34.6	1787	85.6	95.0
4/4	40.0	45.0	1782	88.0	94.6
5/4	50.0	56.3	1777	88.6	93.9

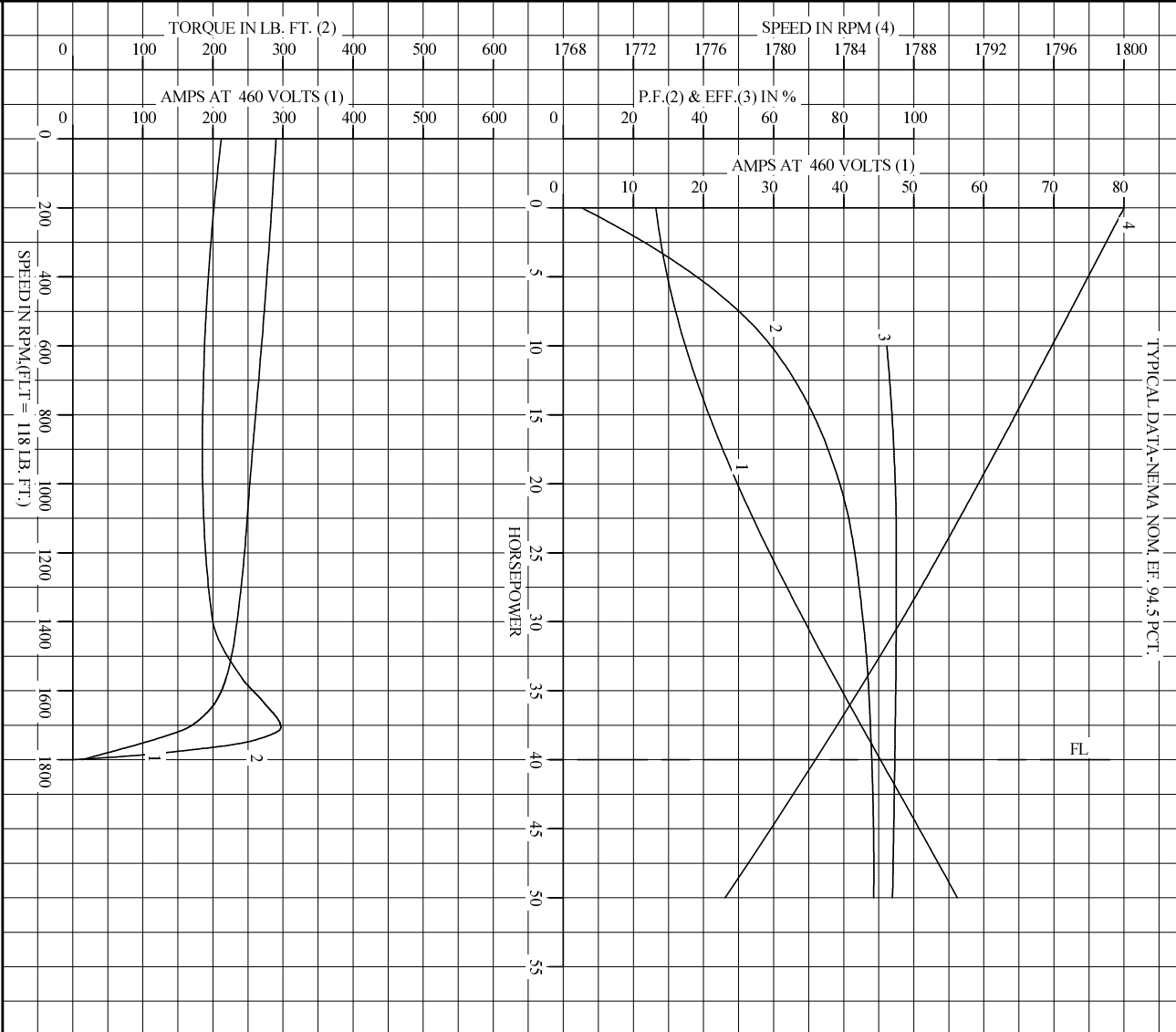
SPEED TORQUE					
	RPM	TORQUE % FULL LOAD	TORQUE LB.-FT.	AMPERES	
LOCKED ROTOR	0	180	212	290	
PULL UP	915	157	185	256	
BREAKDOWN	1706	252	297	165	
FULL LOAD	1782	100	118	45.0	

AMPERES SHOWN FOR 460. VOLT CONNECTION. IF OTHER VOLTAGE CONNECTIONS ARE AVAILABLE, THE AMPERES WILL VARY INVERSELY WITH THE RATED VOLTAGE

REMARKS: TYPICAL DATA
TYPICAL DATA-NEMA NOM. EF. 94.5 PCT.

BALDOR	DR. BY P.B. GREENE	A-C MOTOR
	CK. BY C.P. WILLIAY	
	APP. BY C.P. WILLIAY	
	DATE 01/14/92	
PERFORMANCE DATA		A36WG0744-R001
		ISSUE DATE 12/15/10

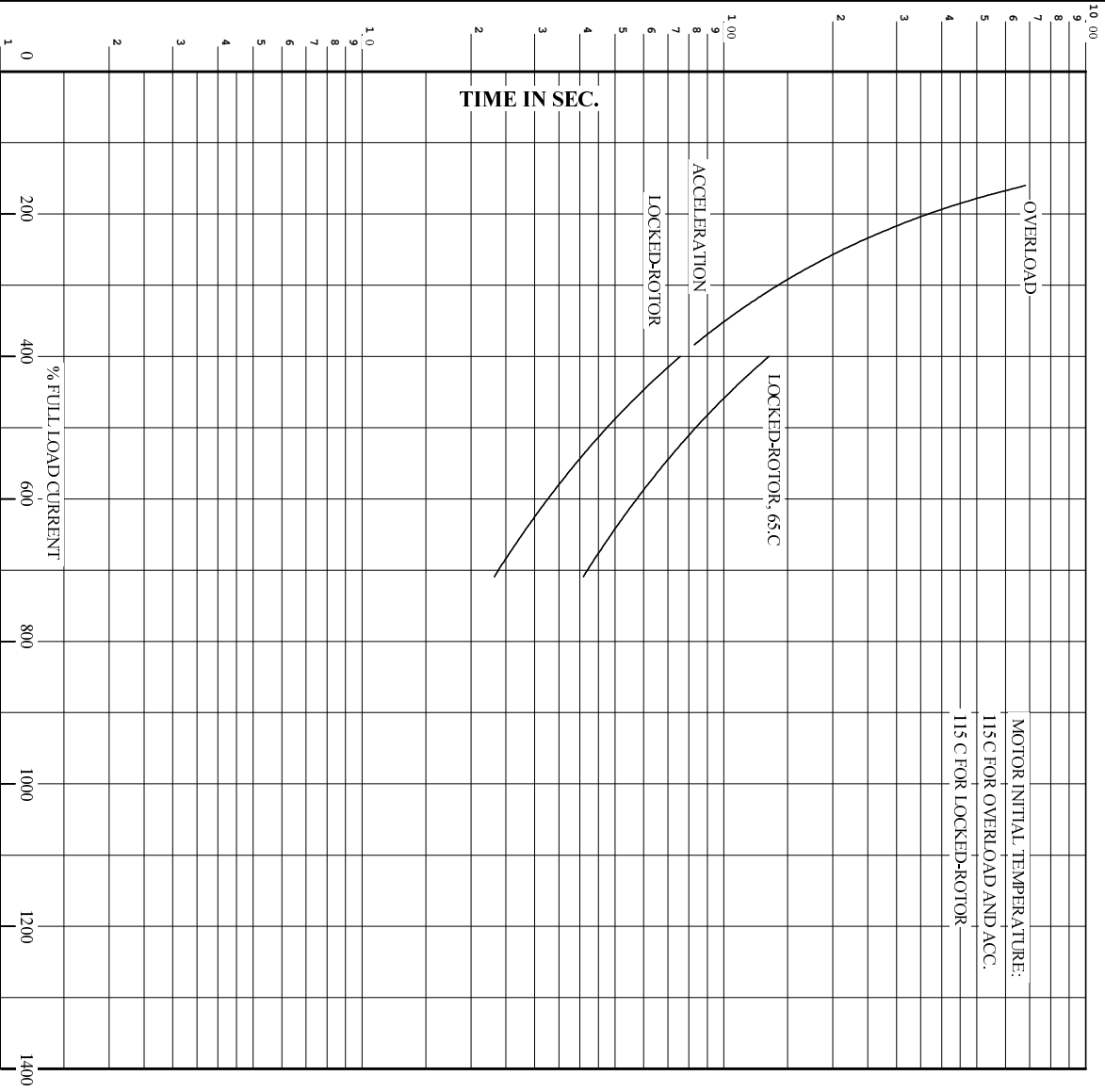
REL. S.O. _____ RPM 1785 S.F. 1.00 ROTOR 418141-35-EE
 FRAME 364U VOLTS 460 NEMA DESIGN B TEST S.O. TYPICAL DATA
 HP 40 AMPS 45 CODE LETTER G TEST DATE ---
 TYPE P DUTY CONT ENCLOSURE TEFC STATOR RES. @ 25 °C .173
 PHASE/HERTZ 3/60 AMB °C/INSUL 65/F E/S 591795 OHMS (BETWEEN LINES)



AMPERES SHOWN FOR 460 VOLT CONNECTION, IF OTHER VOLTAGE CONNECTIONS ARE AVAILABLE, THE AMPERES WILL VARY INVERSELY WITH THE RATED VOLTAGE.

	DR. BY _____	RS. GREENE	A-C MOTOR PERFORMANCE CURVES A36WG0744R001 ISSUE DATE 12/15/10
	CK. BY _____	CP. WILBY	
	APP. BY _____	CP. WILBY	
	DATE 01/14/92		

RET. S.O. RPM 1785 S.F. 1.00 ROTOR 418141-35-EE
 FRAME 364U VOLTS 460 NEMA DESIGN B TEST S.O. TYPICAL DATA
 HP 40 AMPS 45 CODE LETTER G TEST DATE ---
 TYPE P DUTY CONT ENCLOSURE TEFC STATOR RES. @ 25 C. 1.73
 PHASE/HERTZ 3/60 AMB C/INSUL 65/F E/S 591795 OHMS (BETWEEN LINES)



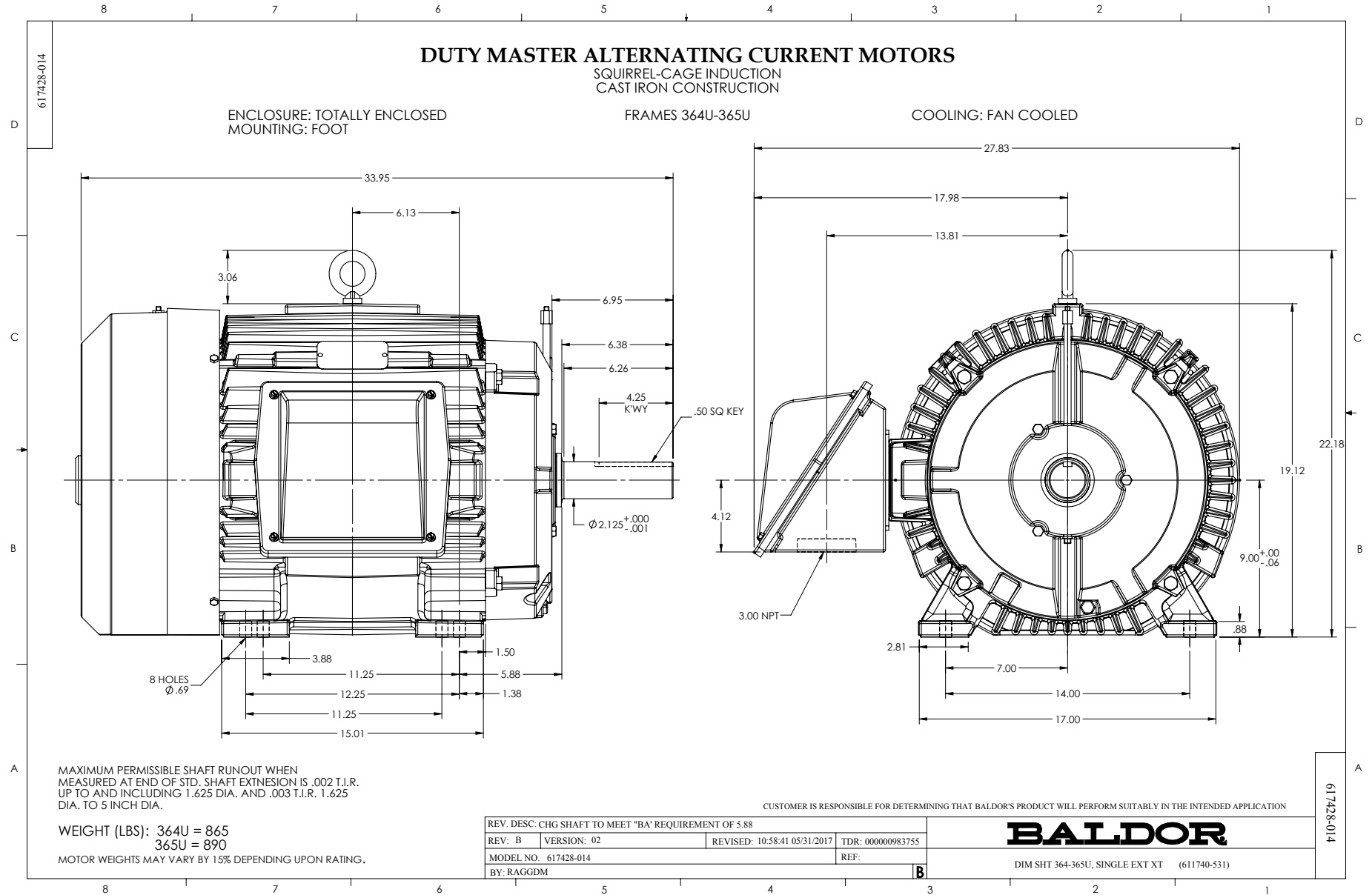
REMARKS: TYPICAL DATA-NEMA NOM. EF. 94.5 PCT.

AMPERES SHOWN FOR 400 VOLT CONNECTION, IF OTHER VOLTAGE CONNECTIONS ARE AVAILABLE, THE AMPERES WILL VARY INVERSELY WITH THE RATED VOLTAGE.



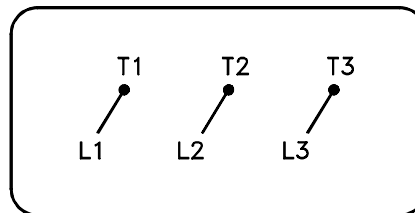
DR. BY P.B. GREENE
 CK. BY C.P. WILLIAMS
 App. BY C.P. WILLIAMS
 DATE 01/14/92

A-C MOTOR
PERFORMANCE A36WG0744-R001
CURVES ISSUE DATE 12/15/10



416820-036

A-C MOTOR
CONNECTION DIAGRAM
STANDARD 3 LEAD CONNECTED



(N.P. 1575-BA)

416820-036

REV. DESC: LOADED TO BUS, C/R 335225		
REV. LTR: -	VERSION: 00	TDR: 000000538207
FILE: \MGA\00000\682	REVISED: 11:54:06 04/30/2010	
MTL: -	BY: RAGRA	

BALDOR

CONN DIAG - STANDARD 3 LEAD

SH 1 of 1

Marketing maintained PDF of MN408:

<http://www.baldor.com/support/Literature/Load.ashx/MN408?ManNumber=MN408>

Marketing maintained PDF of MN416:

<http://www.baldor.com/support/Literature/Load.ashx/MN416?ManNumber=MN416>